

VELUX®

TRADITION WITH A TWIST
A House in Kakenstorf, Germany





A WISH FOR LIGHT

Every story of a new single-family house begins with the question why was it constructed. Many stories are similar and start with the needs of a growing family, but by far, not all families have such a clear picture of their wishes that they decide to start a house from scratch. The Vollmer family knew what they dream of: a house with equal rooms for all children, a bedroom with a dressing room, lots of space on the ground floor and plenty of daylight.

“We had VELUX windows in our previous home, a row house which we have refurbished to meet our needs as good as a refurbishment can, so we knew about the advantages of light coming from above.”

Jan Vollmer, investor and inhabitant of the house

After a research of the market, they decided to entrust the design and construction of their new home with WITO Massivhaus- und Baugesellschaft mbH. Name of the company – in German – makes a hint to the solid construction of houses as well as the execution of their designs. The company is well known around Hamburg and awarded with seal of quality for their products.

A standard project was customised to meet the exact needs of the future inhabitants. The roof windows were added later, though, as the investors were used to more daylight.







AN INDOOR PLAYGROUND

One enters the house through a spacious lobby, with entrances to a guest toilet and wardrobe located symmetrically just behind the front door. The hall, with stair to the first floor, opens up on to the dining area overlooking the garden. The open, almost symmetrical layout with the sofa corner on the right and kitchen on the left has warm, light, friendly materials and plenty of daylight.

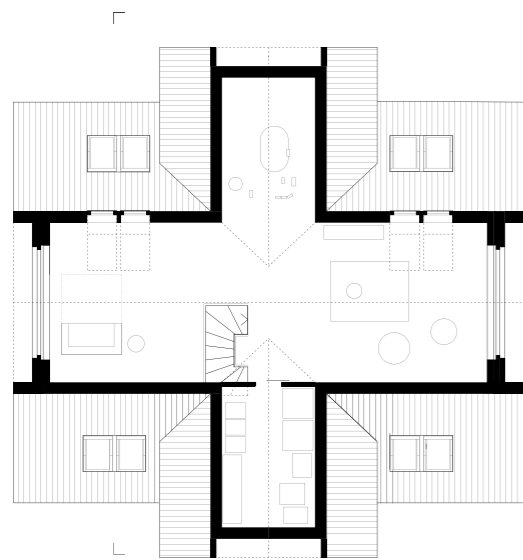
The upper floor with bedrooms is divided into the parents and kids area – and the tiny fuse box and music server room. The entrance to the master bedroom with a private bath leads through a spectacular dressing-room with balcony door. This unusual solution is convenient and allows one partner to stand up and get ready without waking up the spouse. The two kids have their bathroom and identical bedrooms.

The attic – which the investor finishes off by himself – will be an open space for the children to play, will have a corner with a guest bed-sofa and storage area under the lower roof gable above the house entrance. Large VELUX windows provide lots of daylight, making it a dream playground on days when the weather does not allow the children to play outdoors.

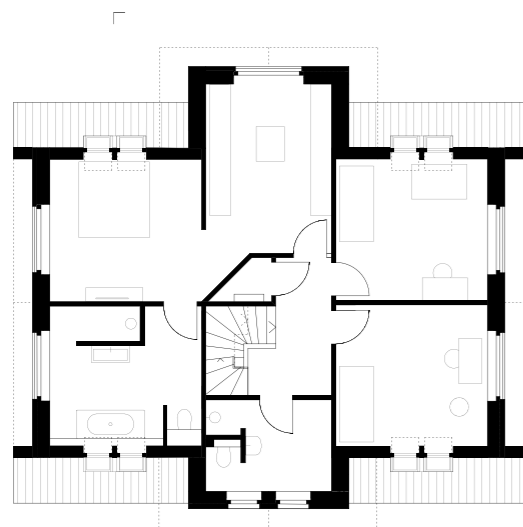
“Although the kids’ bedrooms are rather large, it is not possible to leave a whole toy train or complicated brick constructions standing in the middle and still be able to go to bed or do the homework comfortably. The attic is the space to play big time.”

Jan Vollmer, investor and inhabitant of the house

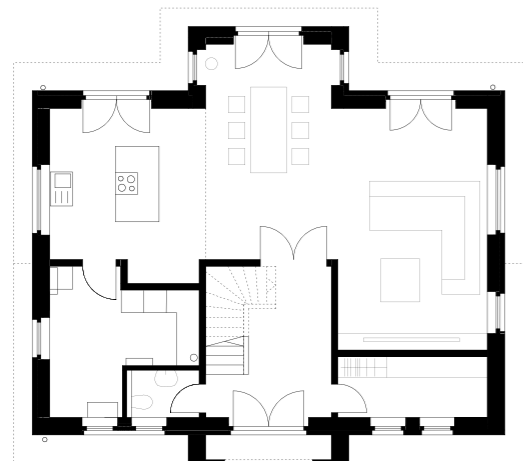




Attic



First floor



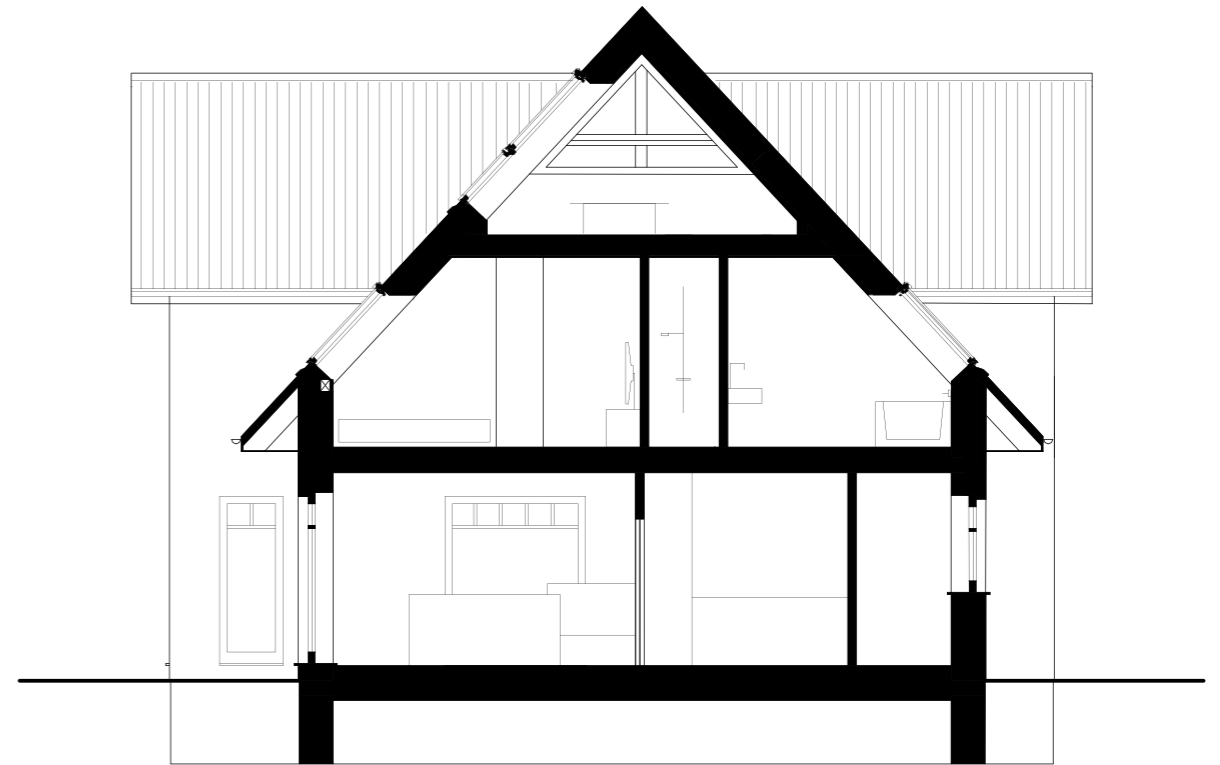
Ground floor

"During the whole design process, we were making decisions, together with WITO designers. The roof windows were added later, though: despite the openings in the gable walls there was not as much light as we wanted. We contacted VELUX and received a proposal on how to enhance the rooms. A sun tunnel and six pairs of double-windows, two of them double-height, lighten up the interiors.

VELUX visualisations confirmed what we were doing the right thing. It gave us a good feeling since it was a rather large investment. We were happy to see that the rooms turned out exactly like expected."

Jan Vollmer, investor and inhabitant of the house





The compact, symmetrical volume is derived from the local housing tradition. With its sloped roof of 47 degrees and brick facade, the house matches its surroundings, with one difference - the amount of roof openings. Only in one place, a roof window is missing from the else symmetrical layout, as the area was used for the mounting of solar panels.

Attic height reaches 2.40m directly under the roof gable, which does not leave much room for grown-ups. Still, there is space for a guest bed-sofa and storage - the rest is for the children to play.

"I have also worked on our construction site. As a kid, I was dreaming of becoming an architect, but after my draftsman apprenticeship, I started working in other fields. I still have the hands-on attitude, and the affinity to architecture stayed. I was mounting the roof windows together with the roofers, and did the entire electric installation in the building, programmed in-house music server. Currently I am perfecting the design of the bathrooms and finishing off the attic."

Jan Vollmer, investor and inhabitant of the house



PROJECT DATA

Project: Single-family house
Location: Kakenstorf, Germany
Design: WITO Massivhaus- und Baugesellschaft mbH
Time: 2019
Photos: Torben Eskerod

VELUX Deutschland GmbH
Gazellenkamp 168
DE-22527 Hamburg
Tel: +49 40 547070

Bringing light to life™

VELUX®